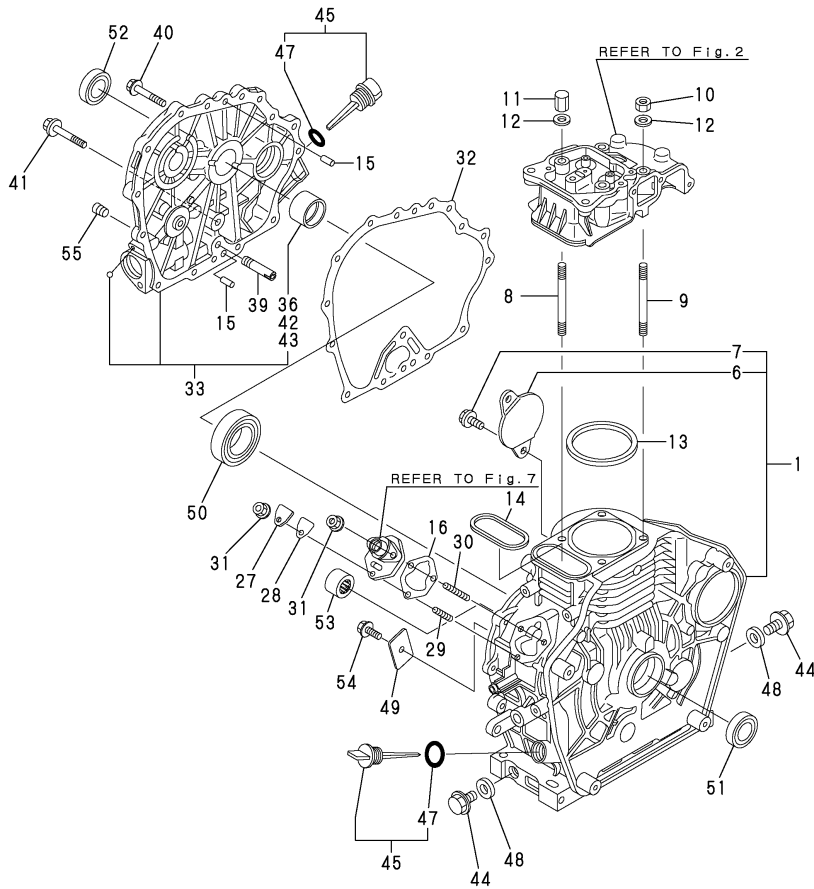


Fig.1.CYLINDER BLOCK

(A)=L40AE-DPY2
(B)=L40AE-DP2ST
(C)=L40AE-DP2T

(D)=
(E)=
(F)=



REF.	LEV.	PARTS NO.	DESCRIPTION	Q'TY						I	R
				(A)	(B)	(C)	(D)	(E)	(F)		
1	1	714271-01562	BLOCK ASSY, CYLINDER	1	1	1					
6	2	114350-01700	COVER, STARTER	1	1	1					
7	2	26106-100122	BOLT M10X 12 PLATED	2	2	2					
8	1	114250-01200	STUD, CYL. HEAD	2	2	2					
9	1	114250-01210	STUD, CYL. HEAD	2	2	2					
10	1	114250-01221	NUT 8	2	2	2					
11	1	114250-01251	CAP NUT 8	2	2	2					
12	1	124950-01250	WASHER	4	4	4					
13	1	114251-01340	GASKET, CYL. HEAD 0.5	1	1	1					
14	1	114250-01380	O-RING	1	1	1					
15	1	114270-01600	PARALLEL PIN 8X12	2	2	2					
16	1	114250-01800	SHIM SET	1	1	1					
27	1	114250-01830	COVER, INSPEC. WINDOW	1	1	1					
28	1	114250-01841	GASKET	1	1	1					
29	1	26226-060182	STUD M 6X 18 PLATED	1	1	1					
30	1	26226-060222	STUD M 6X 22 PLATED	2	2	2					
31	1	26366-060002	NUT M 6	3	3	3					
32	1	114250-01412	GASKET, CRANK CASE	1	1	1					
33	1	114260-01455	COVER (D), CRANK CASE	1	1	1					
36	2	114250-02100	BEARING, MAIN	1	1	1					1
39	1	114250-35150	PIPE, LO. INLET	1	1	1					
40	1	26106-060252	BOLT M 6X 25 PLATED	14	14	14					
41	1	26106-080352	BOLT M 8X 35 PLATED	1	1	1					
42	1	114250-02200	MAIN BEARING US=0.25	1	1	1					2
43	1	114250-02210	MAIN BEARING US=0.50	1	1	1					3
44	1	105425-01690	PLUG M16	2	2	2					
45	1	114299-01760	CAP, W/LUB. OIL GAUGE	2	2	2					
47	2	114299-01950	O-RING	2	2	2					
48	1	22190-160002	SEAL WASHER 16S	2	2	2					
49	1	114299-02030	RETAINER	1	1	1					
50	1	114250-02113	BALL BEARING	1	1	1					
51	1	160110-02220	SEAL, OIL	1	1	1					
52	1	160210-02220	SEAL, OIL	1	1	1					
53	1	24162-152112	NEEDLE BEARING	1	1	1					
54	1	26106-080122	BOLT M 8X 12 PLATED	1	1	1					
55	1	23876-010000	PLUG PT1&8, SCREW	1	1	1					

Remarks
 (1) REPAIR PART.
 (2) UNDER SIZED (U.S.=0.25) PART.
 (3) UNDER SIZED (U.S.=0.50) PART.

Fig.2.CYLINDER HEAD & BONNET

2.CYLINDER HEAD & BONNET

(A)=L40AE-DPY2
(B)=L40AE-DP2ST
(C)=L40AE-DP2T

(D)=
(E)=
(F)=

REF.	LEV.	PARTS NO.	DESCRIPTION	Q'TY						I	R
				(A)	(B)	(C)	(D)	(E)	(F)		
1	1	114770-11020	HEAD ASSY, CYLINDER	1	1	1					
6	1	114250-11101	VALVE, SUCTION	1	1	1					
7	1	114250-11113	VALVE, EXHAUST	1	1	1					
8	1	114250-11120	SPRING, VALVE	2	2	2					
9	1	114250-11180	RETAINER, SPRING	2	2	2					
10	1	114250-11290	SUPPORT, ROCKER ARM	1	1	1					
13	1	114250-11340	SEAL, VALVE STEM	2	2	2					
14	1	119260-11370	CAP, VALVE	1	1	1					
15	1	114250-11460	GASKET, NOZZLE	1	1	1					
16	1	114350-11470	SPACER, NOZZLE	1	1	1					
17	1	114250-11600	WASHER	2	2	2					
18	1	114250-11651	ARM ASSY, INTAKE	1	1	1					
20	2	114250-11240	SCREW, VALVE ADJUST.	1	1	1					
21	2	26856-060002	LOCK NUT 6	1	1	1					
22	1	714270-11660	ARM ASSY, EX-HAUST	1	1	1					
25	3	114250-11240	SCREW, VALVE ADJUST.	1	1	1					
26	3	26856-060002	LOCK NUT 6	1	1	1					
27	2	119260-11370	CAP, VALVE	1	1	1					
28	1	114250-11901	RETAINER	1	1	1					
29	1	22351-040008	SPRING PIN 4X 8	1	1	1					
30	1	26106-080452	BOLT M 8X 45 PLATED	1	1	1					
31	1	26226-060502	STUD M 6X 50	2	2	2					
32	1	26366-060002	NUT M 6	2	2	2					
33	1	27310-065001	COTTER	2	2	2					
35	1	114250-11311	GASKET, BONNET	1	1	1					
36	1	183250-11960	BONNET ASSY, HEAD	1							
37	1	183250-11953	BONNET CMP							1	
39	2	183250-03601	SHAFT, DECOMPRESSION	1		1					
40	2	114250-03640	SPRING	1		1					
43	2	22312-030160	PARALLEL PIN 3X16	1		1					
46	2	41868-170000	PLUG 17 BORE	1		1					
47	1	114250-11951	BONNET ASSY, HEAD							1	
49	2	114250-03591	SHAFT ASSY, DECOMP.			1					
52	2	114250-03640	SPRING			1					
54	2	22312-030160	PARALLEL PIN 3X16			1					
57	1	26106-060552	BOLT M 6X 55 PLATED	2	2	2					
58	1	183250-03410	LEVER, DECOMPRESSION	1		1					
59	1	183250-03450	BRACKET	1		1					
60	1	183250-03510	LINK	1		1					
61	1	183250-03550	JOINT	2		2					
62	1	160670-66350	COLLAR	1		1					
63	1	26106-060202	BOLT M 6X 20 PLATED	1		1					
64	1	26366-060002	NUT M 6	1		1					
65	1	26476-060142	BOLT M 6X 14, TAPPING	2		2					
66	1	26756-060002	LOCK NUT 6	1		1					

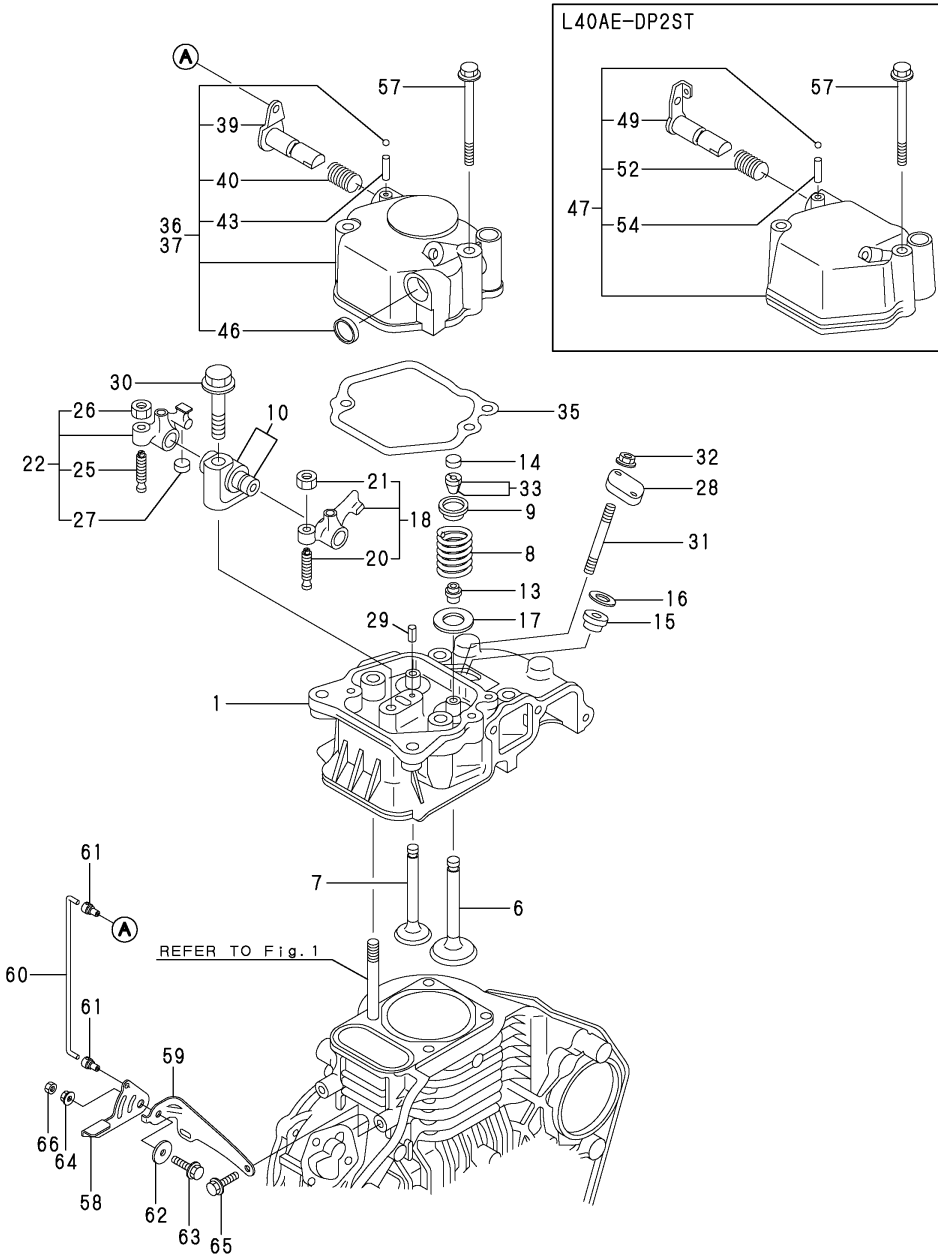
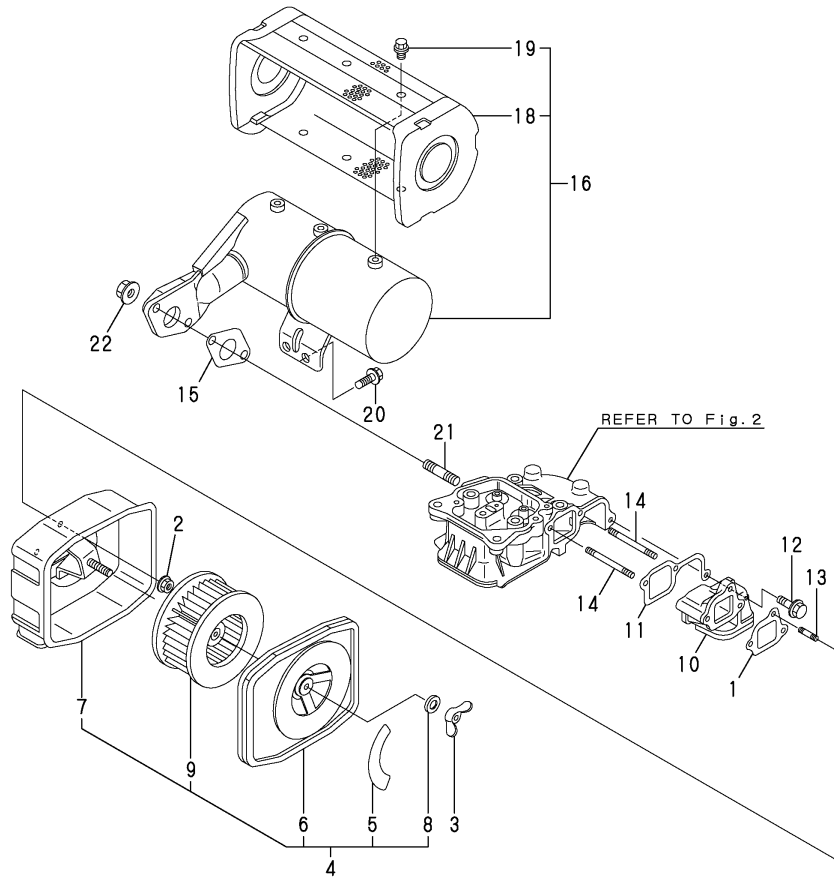


Fig.3.AIR CLEANER & MUFFLER

3.AIR CLEANER & MUFFLER

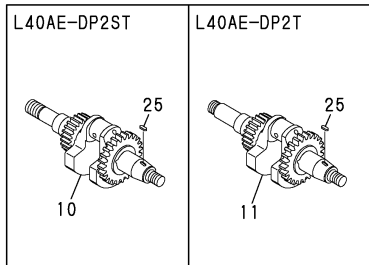
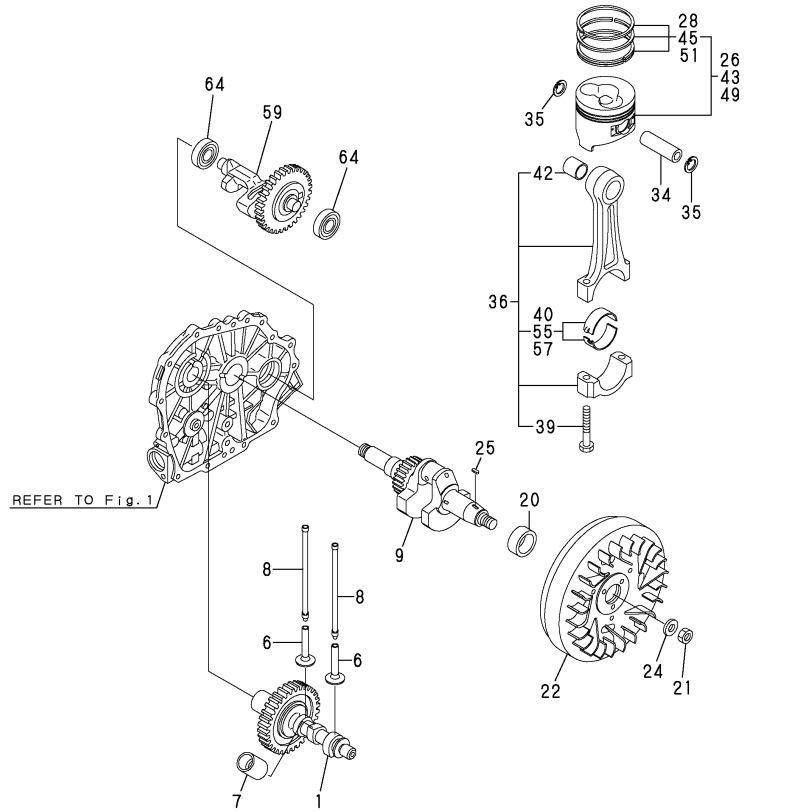
(A)=L40AE-DPY2
(B)=L40AE-DP2ST
(C)=L40AE-DP2T

(D)=
(E)=
(F)=



REF.	LEV.	PARTS NO.	DESCRIPTION	Q'TY						I	R
				(A)	(B)	(C)	(D)	(E)	(F)		
1	1	114250-12211	GASKET, AIR CLEANER	1	1	1					
2	1	114250-12300	U-NUT	3	3	3					
3	1	114250-12550	WING-NUT, M6	1	1	1					
4	1	114250-12570	CLEANER, AIR	1	1	1					
5	2	114770-07450	LABEL, AIR CLEANER	1	1	1					
6	2	114250-12520	COVER, AIR CLEANER	1	1	1					
7	2	114250-12530	CASE, AIR CLEANER	1	1	1					
8	2	114250-12560	WASHER M6, SEAL	1	1	1					
9	2	114250-12581	ELEMENT, WET AIR	1	1	1					
10	1	114299-12010	PIPE, AIR INTAKE	1	1	1					
11	1	114250-12201	GASKET, AIR INTAKE	1	1	1					
12	1	26106-060252	BOLT M6X.25 PLATED	1	1	1					
13	1	26226-060142	STUD M6X 14 PLATED	1	1	1					
14	1	26226-060652	STUD M6X 55 PLATED	2	2	2					
15	1	114250-13201	GASKET (NON-ASB)	1	1	1					
16	1	114250-13521	MUFFLER W/COVER	1	1	1					
18	2	114250-13701	COVER, MUFFLER	1	1	1					
19	2	26106-060082	BOLT M6X 8 PLATED	6	6	6					
20	1	26106-060122	BOLT M6X 12 PLATED	2	2	2					
21	1	26216-080182	STUD M8X 18 PLATED	2	2	2					
22	1	26306-080002	NUT	2	2	2					

Fig.4.CRANKSHAFT,PISTON & CAMSHAFT



Remarks
 (1)OVER SIZED(O.S.=0.25)PART.
 (2)OVER SIZED(O.S.=0.50)PART.
 (3)UNDER SIZED(U.S.=0.25)PART.
 (4)UNDER SIZED(U.S.=0.50)PART.

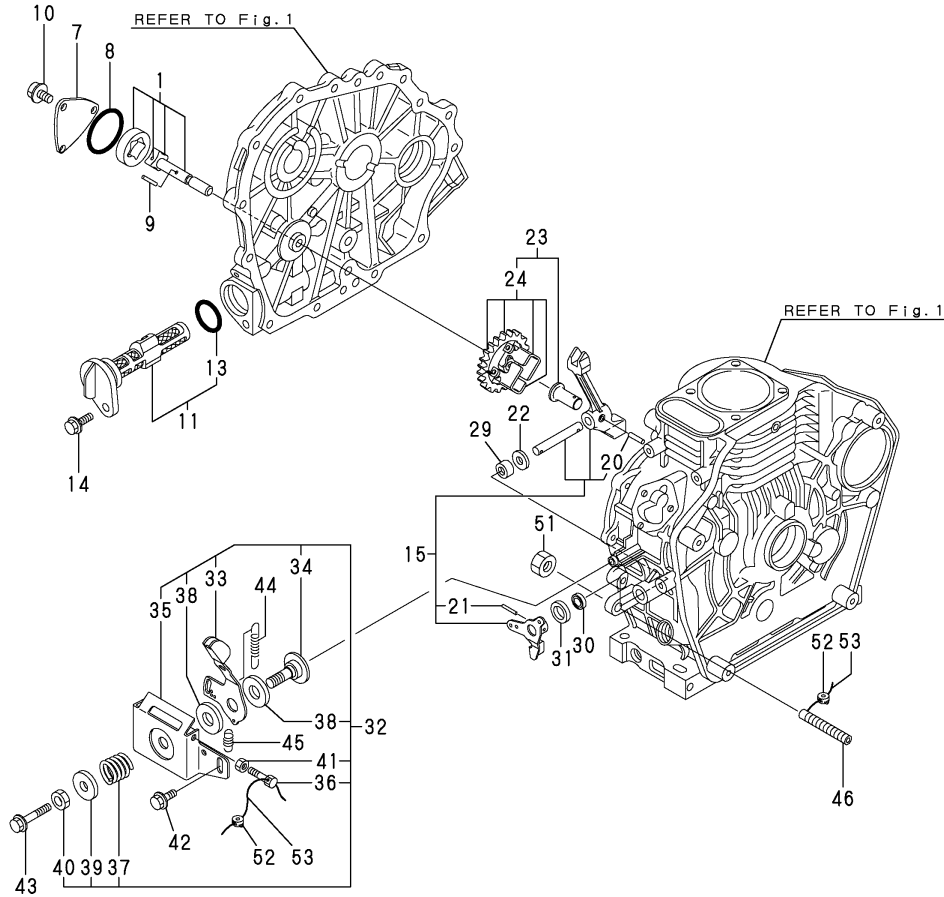
4.CRANKSHAFT,PISTON & CAMSHAFT

(A)=L40AE-DPY2
 (B)=L40AE-DP2ST
 (C)=L40AE-DP2T

(D)=
 (E)=
 (F)=

REF.	LEV.	PARTS NO.	DESCRIPTION	Q'TY						I	R
				(A)	(B)	(C)	(D)	(E)	(F)		
1	1	714780-14580	CAMSHAFT (D) ASSY	1	1	1					
6	1	114250-14200	TAPPET	2	2	2					
7	1	114771-14260	TAPPET,F.O.	1	1	1					
8	1	114250-14451	ROD,PUSH	2	2	2					
9	1	714280-21710	CRANKSHAFT ASSY	1							
10	1	714288-21760	CRANKSHAFT ASSY,(DP)		1						
11	1	714280-21700	CRANKSHAFT ASSY				1				
20	1	183250-21350	SPACER	1							
21	1	103854-01221	NUT M16	1	1	1					
22	1	114299-21420	FLYWHEEL, DE	1	1	1					
24	1	114250-21550	WASHER, FLYWHEEL	1	1	1					
25	1	22512-040120	KEY 4X 12	1	1	1					
26	1	714280-22721	PISTON W/RINGS	1	1	1					
28	2	714250-22503	RING SET, PISTON	1	1	1					
34	1	114299-22300	PIN, PISTON	1	1	1					
35	1	22252-000190	CIRCLIP 19	2	2	2					
36	1	714299-23700	ROD ASSY, CONNECTING	1	1	1					
39	2	119265-23200	BOLT, ROD	2	2	2					
40	2	714770-23600	BEARING, CRANKPIN	1	1	1					
42	2	114770-23100	BUSH, PISTON PIN	1	1	1					
43	1	714280-22621	PISTON W/RING OS=25	1	1	1					1
45	2	714250-22543	RING SET O.S=0.25	1	1	1					1
49	1	714280-22581	PISTON W/RING OS=0.5	1	1	1					2
51	2	714250-22551	RING SET O.S=0.50	1	1	1					2
55	1	714770-23610	BEARING,PIN(U.S.=0.25)	1	1	1					3
57	1	714770-23620	BEARING,PIN(U.S.=0.50)	1	1	1					4
59	1	714770-28511	SHAFT ASSY, BALANCER		1	1					
64	1	24101-062024	BALL BEARING		2	2					

Fig.5.LUB.OIL PUMP & GOVERNOR



5.LUB.OIL PUMP & GOVERNOR

(A)=L40AE-DPY2
(B)=L40AE-DP2ST
(C)=L40AE-DP2T

(D)=
(E)=
(F)=

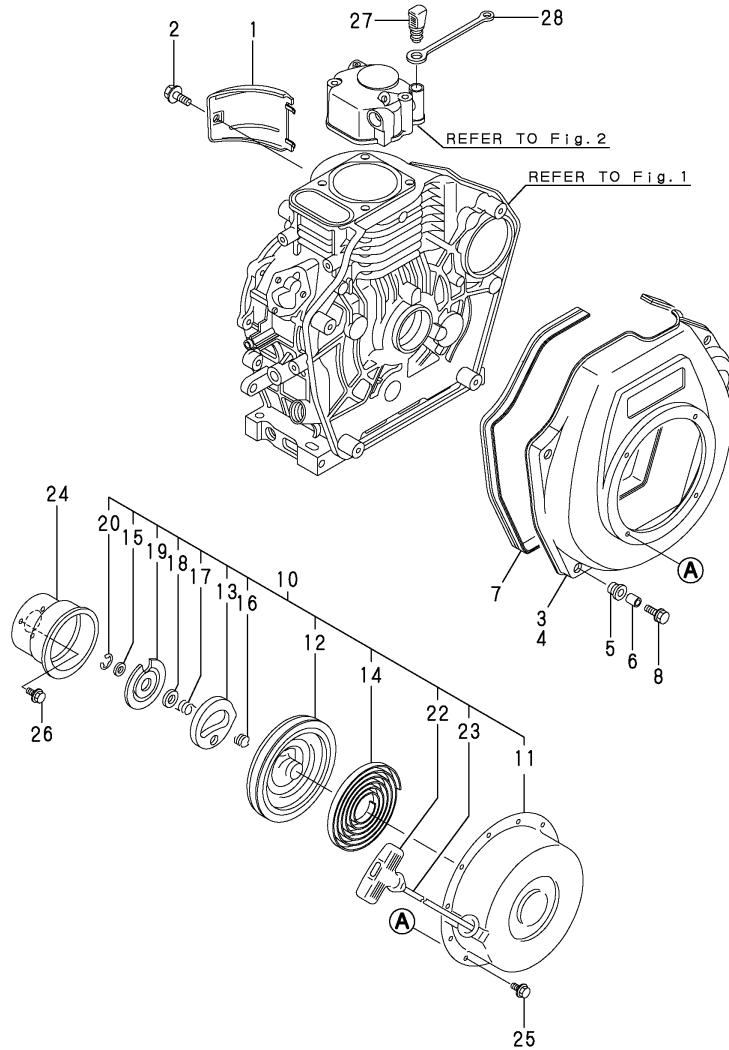
REF.	LEV.	PARTS NO.	DESCRIPTION	Q'TY						I	R
				(A)	(B)	(C)	(D)	(E)	(F)		
1	1	114250-32010	PUMP ASSY, LUB.OIL	1	1	1					
7	1	114250-32070	COVER, LUB. OIL PUMP	1	1	1					
8	1	103338-32570	O-RING	1	1	1					
9	1	22312-030160	PARALLEL PIN 3X16	1	1	1					
10	1	26106-060122	BOLT M 6X 12 PLATED	3	3	3					
11	1	114250-35110	STRAINER, LUB. OIL	1	1	1					
13	2	24341-000224	O-RING 1A S-22.4	1	1	1					
14	1	26106-060162	BOLT M 6X 16 PLATED	1	1	1					
15	1	714250-61501	LEVER ASSY, GOVERNOR	1	1	1					
20	3	22322-030200	TAPER PIN 3X20	1	1	1					
21	2	22322-030200	TAPER PIN 3X20	1	1	1					
22	1	114770-61190	WASHER	1	1	1					
23	1	714770-61700	GOVERNOR ASSY	1	1	1					
24	2	114770-61210	WEIGHT, GOVERNOR	1	1	1					
29	1	114770-61520	BEARING, NEEDLE	2	2	2					
30	1	114770-61600	SEAL, OIL	1	1	1					
31	1	114770-61610	WASHER, THRUST	1	1	1					
32	1	183250-66500	BRACKET ASSY, REGULAT	1	1	1					
33	2	114210-66070	HANDLE, REGULATOR	1	1	1					
34	2	183250-66070	SHAFT, HANDLE	1	1	1					
35	2	183250-66100	BRACKET, REGULATOR	1	1	1					
36	2	114250-66440	BOLT, ADJUSTING	1	1	1					
37	2	104200-66820	SPRING	1	1	1					
38	2	104200-66831	PLATE, FRICTION	2	2	2					
39	2	104200-66850	WASHER (B)	1	1	1					
40	2	26696-100002	LOCK NUT M10	1	1	1					
41	2	26757-060002	NUT M6	1	1	1					
42	1	26106-060142	BOLT M 6X 14 PLATED	1	1	1					
43	1	26106-060452	BOLT M 6X 45 PLATED	1	1	1					
44	1	114770-66010	SPRING, REGULATOR	1	1	1					
45	1	114250-66200	SPRING, RETURN	1	1	1					
46	1	114250-66550	TORQUE SPRING ASSY	1	1	1					
51	1	26776-100002	LOCK NUT M10 PLATED	1	1	1					
52	1	114780-61090	TIN	2	2	2					
53	1	22451-060000	WIRE 0.6	2	2	2					

Fig.6.COOLING & STARTING DEVICE

6.COOLING & STARTING DEVICE

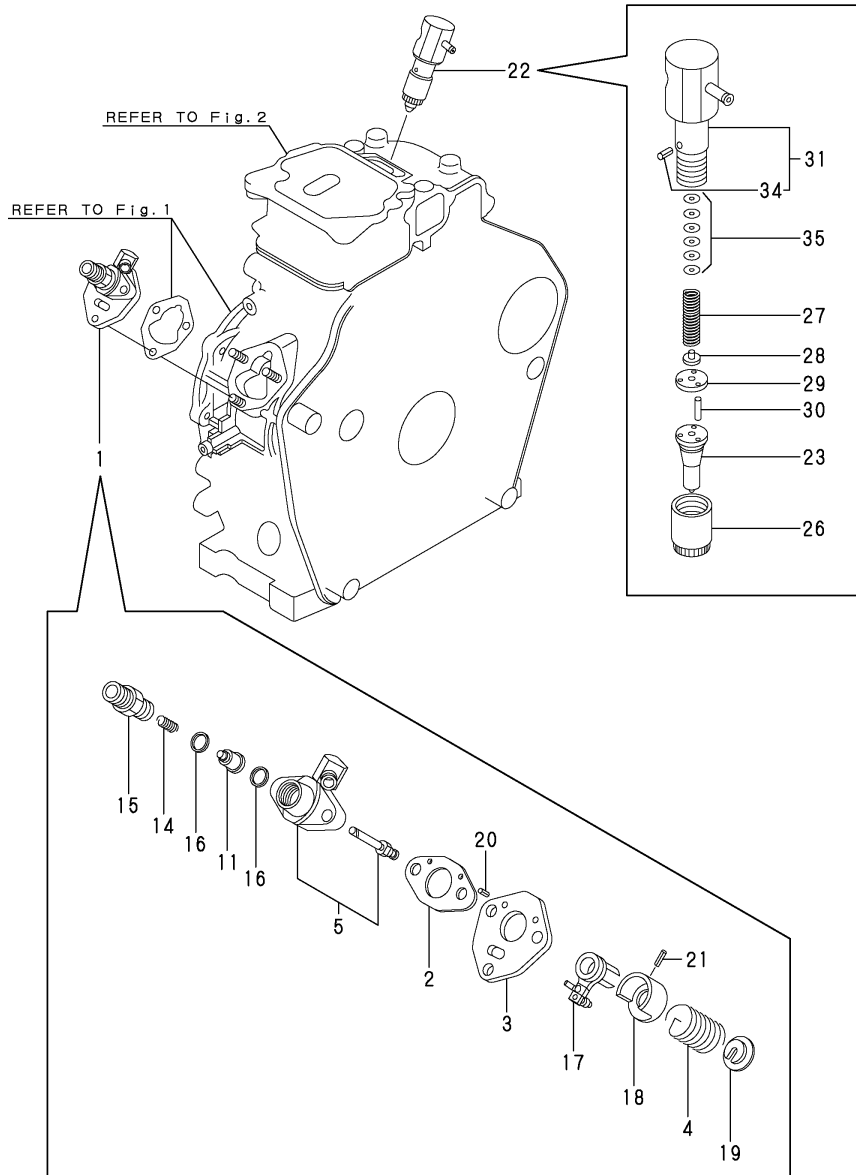
(A)=L40AE-DPY2
(B)=L40AE-DP2ST
(C)=L40AE-DP2T

(D)=
(E)=
(F)=



REF.	LEV.	PARTS NO.	DESCRIPTION	Q'TY						I	R
				(A)	(B)	(C)	(D)	(E)	(F)		
1	1	114299-45210	COVER, CYLINDER	1	1	1					
2	1	26106-060122	BOLT M6X 12 PLATED	1	1	1					
3	1	114780-45100-R	CASE, FAN (RED) (50)	1							
4	1	114788-45100-R	CASE,FAN (RED)(50)		1	1					
5	1	114250-45301	RUBBER, CUSHION	4	4	4					
6	1	114250-45310	COLLAR	4	4	4					
7	1	114250-45330	SEAL, FAN CASE	1	1	1					
8	1	114370-45351	BOLT, FAN CASE	4	4	4					
10	1	114260-76251	RECOIL STARTER(D)ASY	1	1	1					
11	2	114260-76520	CASE (D) W/NO LABEL	1	1	1					
12	2	160260-76520	REEL, RECOIL	1	1	1					
13	2	160260-76530	RATCHET	1	1	1					
14	2	160260-76540	SPRING, SPIRAL	1	1	1					
15	2	160260-76550	WASHER, THRUST	1	1	1					
16	2	160260-76560	SPRING, FRICTION	1	1	1					
17	2	160290-76570	SPRING, RETURN	1	1	1					
18	2	160260-76580	COVER, SPRING	1	1	1					
19	2	160260-76590	PLATE, FRICTION	1	1	1					
20	2	160260-76600	CIRCLIP(E)	1	1	1					
22	2	114250-76620	KNOB, STARTER	1	1	1					
23	2	160260-76630	ROPE, STARTER	1	1	1					
24	1	114250-76590	PULLEY, STARTER	1	1	1					
25	1	26106-060082	BOLT M6X 8 PLATED	4	4	4					
26	1	26106-060122	BOLT M6X 12 PLATED	3	3	3					
27	1	114250-76600	PLUNGER		1	1					
28	1	114250-76610	HOLDER, PLUNGER		1	1					

Fig.7.FUEL INJECTION PUMP & FUEL INJECTION VALVE

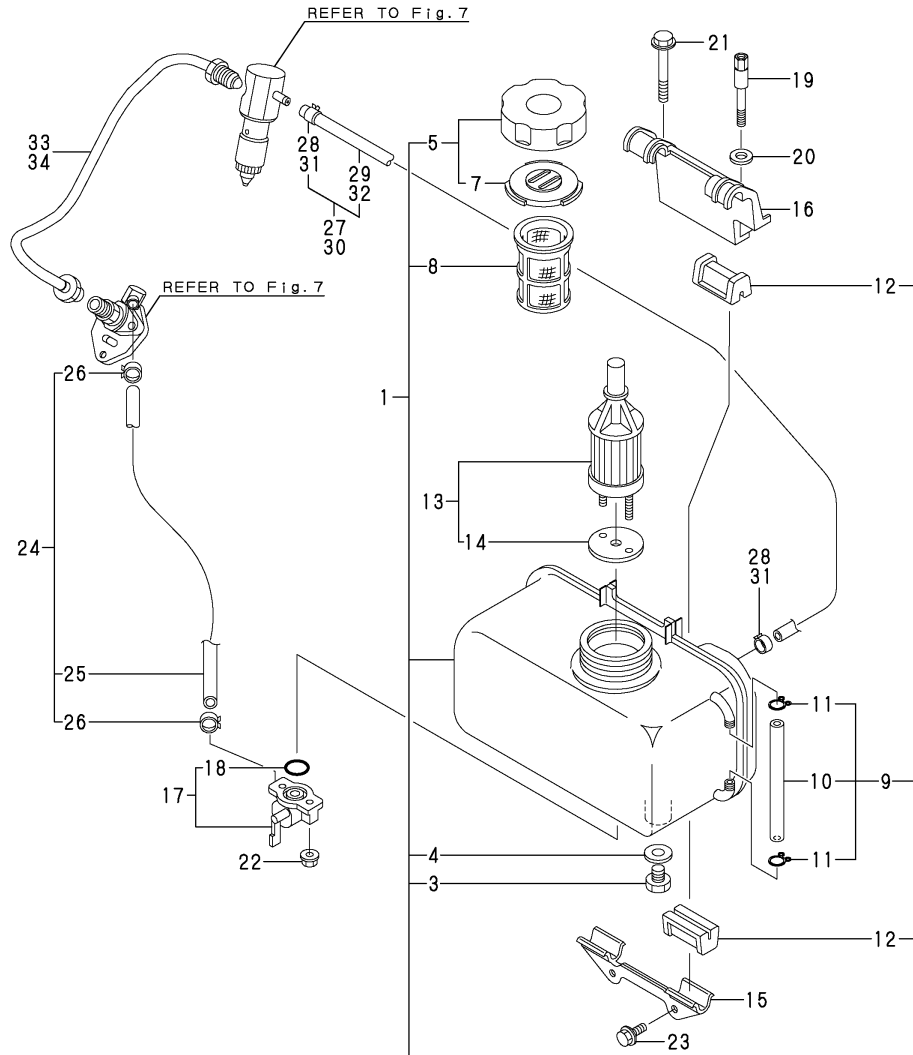


7.FUEL INJECTION PUMP & FUEL INJECTION VALVE

(A)=L40AE-DPY2 (D)=
 (B)=L40AE-DP2ST (E)=
 (C)=L40AE-DP2T (F)=

REF.	LEV.	PARTS NO.	DESCRIPTION	Q'TY						I	R
				(A)	(B)	(C)	(D)	(E)	(F)		
1	1	714250-51200	PUMP ASSY, F.INJECT.	1	1	1					
2	2	105546-51020	GASKET	1	1	1					
3	2	114250-51080	PLATE	1	1	1					
4	2	114250-51160	SPRING	1	1	1					
5	2	114250-51200	BODY, F.I. PUMP	1	1	1					
11	2	114250-51300	VALVE ASSY, DELIVERY	1	1	1					
14	2	105546-51330	SPRING, DELIV. VALVE	1	1	1					
15	2	114250-51340	HOLDER, F.I.P.DELIVE	1	1	1					
16	2	124550-51350	GASKET, DELIVERY	2	2	2					
17	2	114250-51600	LEVER ASSY, CONTROL	1	1	1					
18	2	114250-51640	SEAT (A), SPRING	1	1	1					
19	2	114250-51650	SEAT (B), SPRING	1	1	1					
20	2	22351-020006	SPRING PIN 2X 6	2	2	2					
21	2	22351-030008	SPRING PIN 3X 8	1	1	1					
22	1	714250-53101	VALVE ASSY, F.INJECT	1	1	1					
23	2	114250-53001	NOZZLE ASSY, F.INJECT	1	1	1					
26	2	114250-53080	NUT, NOZZLE CASE	1	1	1					
27	2	114250-53120	SPRING, NOZZLE	1	1	1					
28	2	114250-53130	SEAT, NOZZLE SPRING	1	1	1					
29	2	114250-53140	PLATE, STOP	1	1	1					
30	2	114250-53210	PIN	2	2	2					
31	2	114250-53300	HOLDER ASSY, NOZZLE	1	1	1					
34	3	114250-53331	PIN, SPRING	1	1	1					
35	2	114250-53400	SHIM PACK	1	1	1					

Fig.8.FUEL TANK & FUEL PIPE



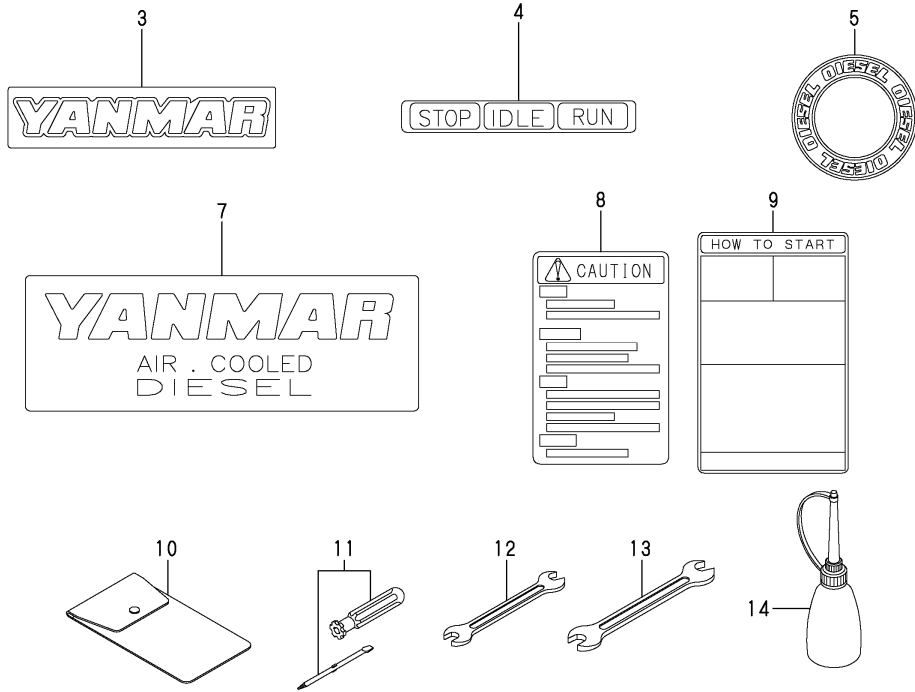
8.FUEL TANK & FUEL PIPE

(A)=L40AE-DPY2
(B)=L40AE-DP2ST
(C)=L40AE-DP2T

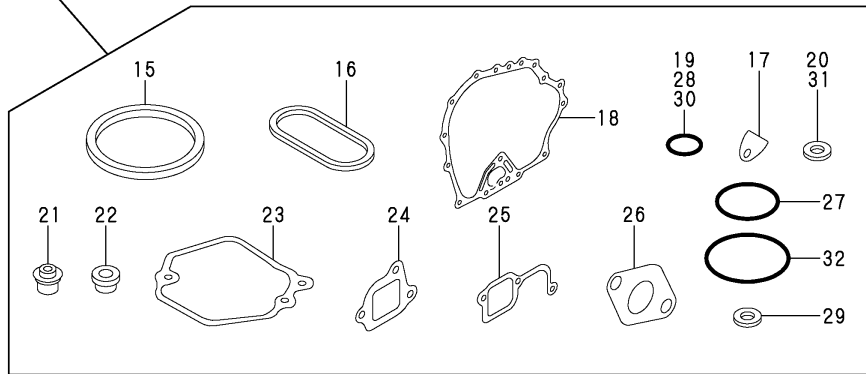
(D)=
(E)=
(F)=

REF.	LEV.	PARTS NO.	DESCRIPTION	Q'TY						I	R
				(A)	(B)	(C)	(D)	(E)	(F)		
1	1	714250-55702	TANK,FUEL (RED)(10)		1						
3	3	105300-55080	PLUG, DRAIN		1						
4	3	23414-080000	GASKET 8, ROUND		1						
5	2	114288-55041	CAP ASSY, FUEL TANK		1						
7	3	114288-55081	VALVE		1						
8	2	114250-55100	FILTER, FUEL		1						
9	2	114770-55200	PIPE ASSY,FUEL GAUGE		1						
10	3	114250-55150	PIPE, GAUGE		1						
11	3	103854-55220	CLAMP		2						
12	2	114250-55201	DAMPER, FUEL TANK		4						
13	1	114250-55121	FILTER, FUEL OIL		1						
14	2	114250-55130	GASKET		1						
15	1	114299-55210	STAY		1						
16	1	114299-55230	STAY (B)		1						
17	1	114250-55301	COCK		1						
18	2	24341-000150	O-RING 1A S-15.0		1						
19	1	114650-55810	BOLT, LIFTING		1						
20	1	22117-080000	WASHER 8		1						
21	1	26106-080452	BOLT M 8X 45 PLATED		1						
22	1	26366-060002	NUT M 6		2						
23	1	26476-060142	BOLT M 6X 14,TAPPING		2						
24	1	114780-59010	PIPE ASSY, FUEL OIL		1						
25	2	114780-59060	PIPE, FUEL OIL		1						
26	2	23080-014000	CLAMP 14		2						
27	1	714250-59060	PIPE ASSY, RETURN		1						
28	2	124722-59050	CLAMP 9		2						
29	2	114250-59060	PIPE, FUEL RETURN		1						
30	1	114883-59040	PIPE ASSY, FUEL B							1	
31	2	124722-59050	CLAMP 9							2	
32	2	114260-59070	PIPE, FUEL							1	
33	1	183250-59800	PIPE, FUEL INJECTION		1		1				
34	1	114250-59800	PIPE, FUEL INJECTION				1				

Fig.9.TOOL,LABEL & GASKET SET



セット販売はできませんので、単品で注文して下さい。
THE SET SALES CANNOT BE DONE.
PLEASE ORDER SEPARATELY.



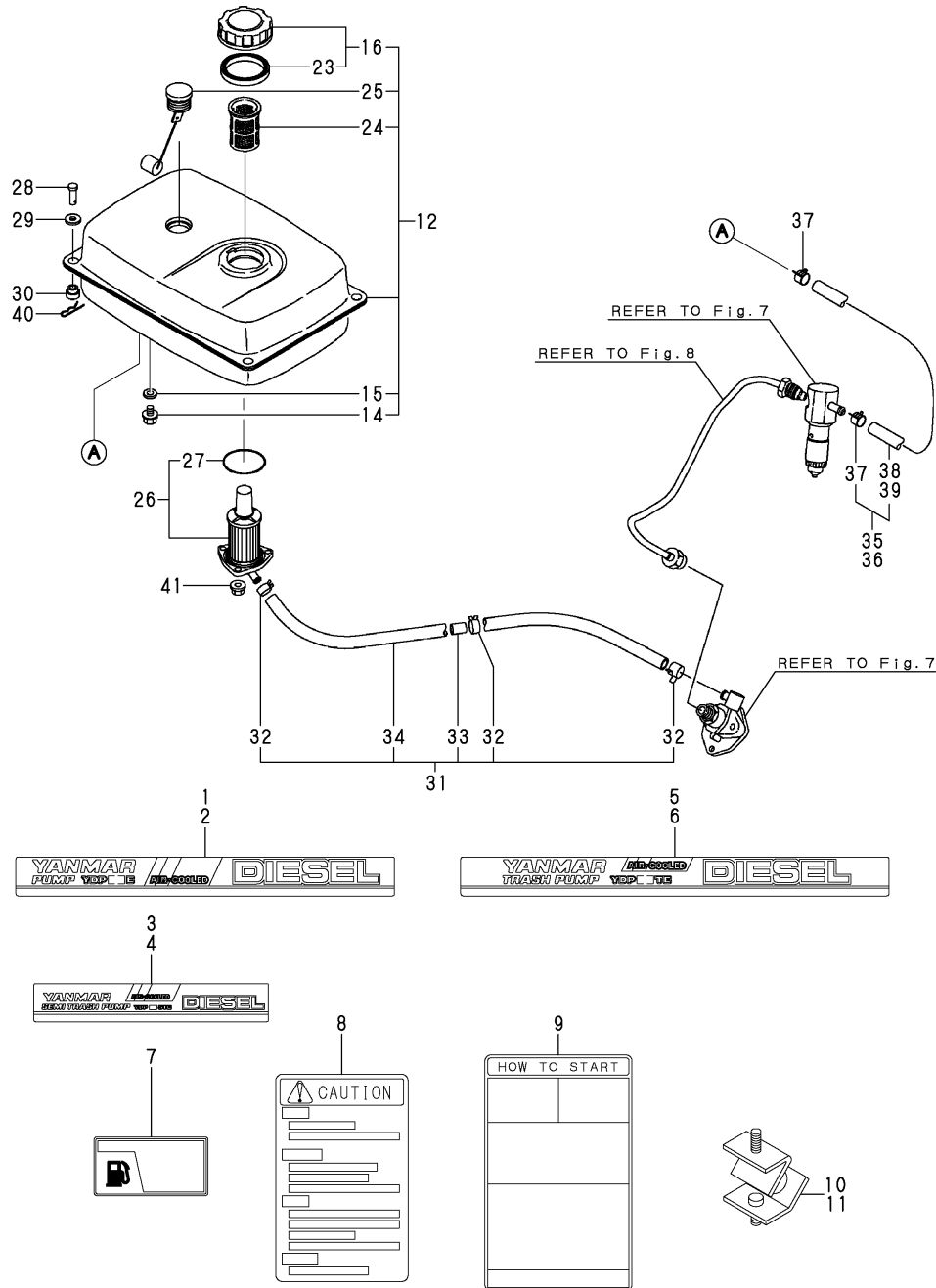
9.TOOL,LABEL & GASKET SET

(A)=L40AE-DPY2
(B)=L40AE-DP2ST
(C)=L40AE-DP2T

(D)=
(E)=
(F)=

REF.	LEV.	PARTS NO.	DESCRIPTION	Q'TY						I	R
				(A)	(B)	(C)	(D)	(E)	(F)		
3	1	114250-07111	LABEL, YANMAR	1	1	1					
4	1	183250-07230	LABEL, OPERATION	1	1	1					
5	1	114261-07350	LABEL	1	1	1					
7	1	114250-07090	LABEL, AIR COOLED				1				
8	1	114268-07240	LABEL, CAUTION				1				
9	1	114268-07350	LABEL, HOW TO START				1				
10	1	114250-92600	BAG, TOOL	1	1	1					
11	1	160330-92730	SCREWDRIVER (+)	1	1	1					
12	1	28110-100120	WRENCH 10X12	1	1	1					
13	1	28110-140170	WRENCH 14X17	1	1	1					
14	1	28210-000150	FEEDER, OIL	1	1	1					
15	1	114251-01340	GASKET,CYL.HEAD 0.5	1	1	1					
16	1	114250-01380	O-RING	1	1	1					
17	1	114250-01841	GASKET	1	1	1					
18	1	114250-01412	GASKET, CRANK CASE	1	1	1					
19	1	114299-01950	O-RING	2	2	2					
20	1	22190-160002	SEAL WASHER 16S	2	2	2					
21	1	114250-11340	SEAL, VALVE STEM	2	2	2					
22	1	114250-11460	GASKET, NOZZLE	1	1	1					
23	1	114250-11311	GASKET, BONNET	1	1	1					
24	1	114250-12211	GASKET, AIR CLEANER	1	1	1					
25	1	114250-12201	GASKET, AIR INTAKE	1	1	1					
26	1	114250-13201	GASKET (NON-ASB)	1	1	1					
27	1	103338-32570	O-RING	1	1	1					
28	1	24341-000224	O-RING 1A S-22.4	1	1	1					
29	1	23414-080000	GASKET 8, ROUND			1					
30	1	24341-000150	O-RING 1A S-15.0			1					
31	1	22190-120002	SEAL WASHER 12	1		1					
32	1	24341-000450	O-RING 1A S-45.0	1		1					

Fig.10.PACKAGED PART



10.PACKAGED PART

(A)=L40AE-DPY2
(B)=L40AE-DP2ST
(C)=L40AE-DP2T

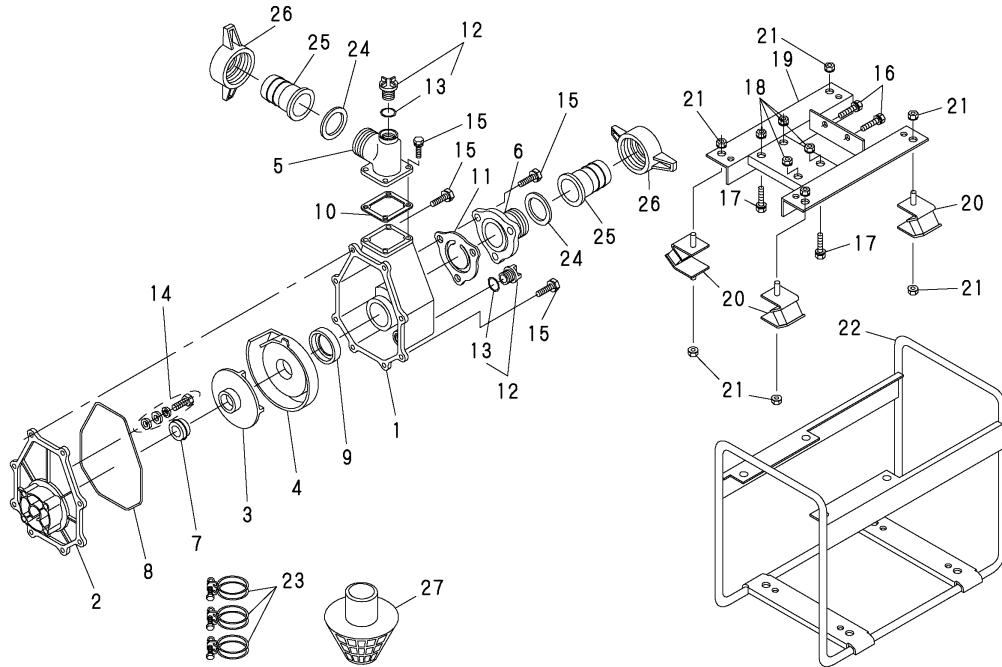
(D)=
(E)=
(F)=

REF.	LEV.	PARTS NO.	DESCRIPTION	QTY						I	R
				(A)	(B)	(C)	(D)	(E)	(F)		
1	1	183178-07160	LABEL, (L) YDP20DE	1							
2	1	183178-07170	LABEL, (R) YDP20DE	1							
3	1	183277-07210	LABEL, (L) YDP20STE		1						
4	1	183277-07220	LABEL, (R) YDP20STE		1						
5	1	183277-07310	LABEL, (L) YDP20TE			1					
6	1	183277-07320	LABEL, (R) YDP20TE			1					
7	1	183251-07190	LABEL, DIESEL FUEL	1		1					
8	1	114268-07240	LABEL, CAUTION	1		1					
9	1	114268-07350	LABEL, HOW TO START	1		1					
10	1	183279-08210	DAMPER		4						
11	1	183250-08220	DAMPER			4					
12	1	783277-55701-R	TANK FUEL ASSY. (10)	1		1					
14	3	104200-55080	PLUG, DRAIN	1		1					
15	3	22190-120002	SEAL WASHER 12	1		1					
16	2	160710-55061	CAP ASSY, FUEL TANK	1		1					
23	3	160393-55050	GASKET, TANK CAP	1		1					
24	2	160710-55100	STRAINER, FUEL TANK	1		1					
25	2	183925-55150	GAUGE, OIL	1		1					
26	1	183254-55120	STRAINER ASSY, FUEL	1		1					
27	2	24341-000450	O-RING 1A S-45.0	1		1					
28	1	183350-55120	PIN 6X 14	4		4					
29	1	183350-55130	WASHER	4		4					
30	1	183720-55210	GROMMET	4		4					
31	1	183366-59011	PIPE, FUEL OIL	1		1					
32	2	106990-44660	CLIP, HOSE	3		3					
33	2	183250-59040	PIECE	1		1					
34	2	183366-59371	PIPE, FUEL OIL	1		1					
35	1	114288-59140	PIPE ASSY, RETURN	1							
36	1	114883-59040	PIPE ASSY, FUEL B			1					
37	2	124722-59050	CLAMP 9	2		2					
38	2	114286-59060	PIPE, FUEL RETURN	1							
39	2	114260-59070	PIPE, FUEL			1					
40	1	22360-060000	SNAP PIN 6	4		4					
41	1	26366-060002	NUT M6	3		3					

Fig.11.PUMP(YDP20E)

(A)=YDP20E
(B)=YDP20STE
(C)=YDP20TE

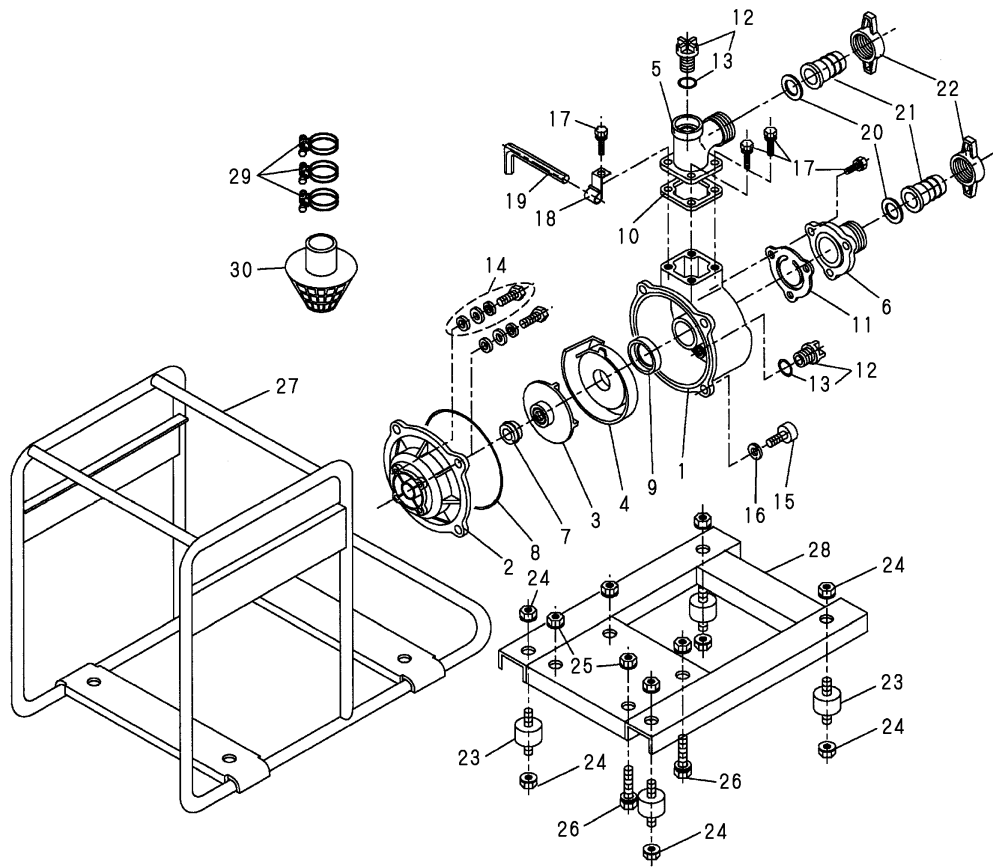
(D)=
(E)=
(F)=



REF.	LEV.	PARTS NO.	DESCRIPTION	Q'TY						I	R
				(A)	(B)	(C)	(D)	(E)	(F)		
1	1	165001-22990	CASING	1							
2	1	165001-23000	CASING COVER	1							
3	1	165001-23010	IMPELLER	1							
4	1	165001-23020	INNER CASING	1							
5	1	165001-23030	BEND	1							
6	1	165001-23040	VALVE CASE	1							
7	1	165001-23050	MECHANICAL SEAL	1							
8	1	165001-23060	PACKING,CASING	1							
9	1	165001-23070	PACKING,INNER CASING	1							
10	1	165001-23080	PACKING,BEND	1							
11	1	165001-23090	CHECK VALVE	1							
12	1	165001-09420	PLUG ASSY	2							
13	2	165001-09410	O-RING	2							
14	1	165001-23100	CASING BOLT ASSY	4							
15	1	165001-23110	HEX BOLT	13							
16	1	165001-23120	HEX BOLT	2							
17	1	165001-23130	HEX BOLT	4							
18	1	165001-23140	FLANGE NUT	4							
19	1	165001-23150	BASE(BLACK)	1							
20	1	183279-08210	DAMPER	4							
21	1	165001-09530	FLANGE NUT	8							
22	1	165001-23160	FRAME(SILVER)	1							
23	1	165001-23170	HOSE BAND	3							
24	1	165001-23180	PACKING,COUPLING	2							
25	1	165001-23190	HOSE COUPLING	2							
26	1	165001-23200	COUPLING HANDLE	2							
27	1	165001-23210	STRAINER	1							

Fig.12.PUMP(YDP20STE)

P/C NEWS No. : Y00S5080-1
 PUBLISHED : 2007/10



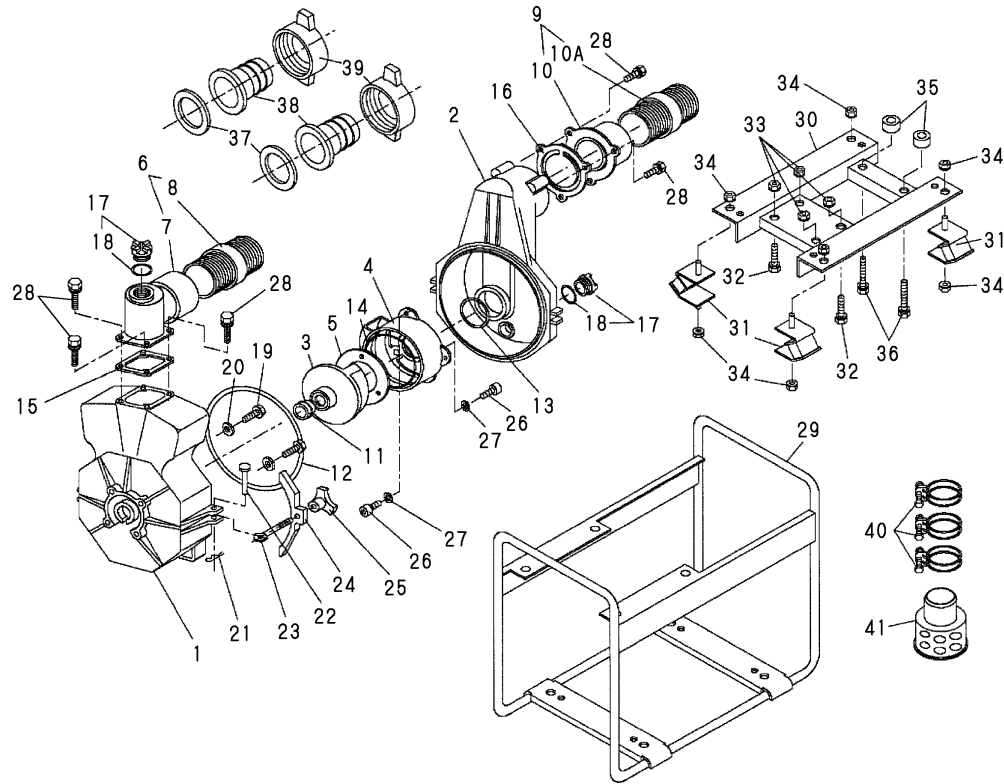
12.PUMP(YDP20STE)

(A)=YDP20E
 (B)=YDP20STE
 (C)=YDP20TE

(D)=
 (E)=
 (F)=

REF.	LEV.	PARTS NO.	DESCRIPTION	Q'TY						I	R
				(A)	(B)	(C)	(D)	(E)	(F)		
1	1	165001-23220	CASING		1						
I	2	165001-23770	CASING COVER		1						
	3	165001-23240	IMPELLER		1						
I	4	165001-27740	INNER CASING		1						
	5	165001-23030	BEND		1						
	6	165001-23040	VALVE CASE		1						
	7	165001-23260	MECHANICAL SEAL		1						
	8	165001-23270	O-RING		1						
	9	165001-23070	PACKING,INNER CASING		1						
	10	165001-23080	PACKING,BEND		1						
	11	165001-23090	CHECK VALVE		1						
	12	165001-09420	PLUG ASSY		2						
	13	165001-09410	O-RING		2						
	14	165001-23100	CASING BOLT ASSY		4						
	15	165001-09800	HEX SOCKET BOLT		4						
	16	165001-09810	SPRING WASHER		4						
	17	165001-23110	HEX BOLT		7						
	18	165001-09790	PLATE		1						
	19	165001-09780	HEX STICK WRENCH		1						
	20	165001-23180	PACKING, COUPLING		2						
	21	165001-23190	HOSE COUPLING		2						
	22	165001-23230	HOSE COUPLING HANDLE		2						
I	23	165001-27750	ANTI VIBRATION RUBBER		4						
	24	165001-23250	SPRING NUT		8						
	25	165001-23140	FLANGE NUT		4						
	26	165001-23130	HEX BOLT		4						
I	27	165001-27760	FRAME (SILVER)		1						
I	28	165001-27770	BASE (BLACK)		1						
	29	165001-23170	HOSE BAND		3						
	30	165001-23280	STRAINER		1						

Fig.13.PUMP(YDP20TE)



13.PUMP(YDP20TE)

(A)=YDP20E
(B)=YDP20STE
(C)=YDP20TE

(D)=
(E)=
(F)=

REF.	LEV.	PARTS NO.	DESCRIPTION	Q'TY						I	R
				(A)	(B)	(C)	(D)	(E)	(F)		
1	1	165001-23290	CASING						1		
2	1	165001-23300	CASING COVER						1		
3	1	165001-23310	IMPELLER						1		
4	1	165001-23320	INNER CASING						1		
5	1	165001-23330	LINER						1		
6	1	165001-23380	BEND ASSY						1		
7	2	165001-23340	BEND						1		
8	2	165001-23360	FITTING PIPE						1		
9	1	165001-23370	VALVE CASE ASSY						1		
10	2	165001-23350	VALVE CASE						1		
10A	2	165001-23360	FITTING PIPE						1		
11	1	165001-23260	MECHANICAL SEAL						1		
12	1	165001-23440	O-RING						1		
13	1	165001-23450	O-RING						1		
14	1	165001-23460	O-RING						1		
15	1	165001-23080	BEND PACKING						1		
16	1	165001-23470	CHECK VALVE						1		
17	1	165001-09420	PLUG ASSY						2		
18	2	165001-09410	O-RING						2		
19	1	165001-09430	FLANGE BOLT						4		
20	1	165001-09440	AL WASHER						4		
21	1	165001-23480	SNAP PIN						2		
22	1	165001-23490	RVMT						2		
23	1	165001-23500	COVER BOLT						2		
24	1	165001-23510	CASING COVER HOLDER						2		
25	1	165001-23520	KNOB						2		
26	1	165001-23530	HEX SOCKT BOLT						5		
27	1	165001-23540	WASHER SPRING						5		
28	1	165001-23110	HEX BOLT						7		
29	1	165001-23550	FRAME(SILVER)						1		
30	1	165001-23560	BASE(BLACK)						1		
31	1	183250-08220	DAMPER						4		
32	1	165001-23130	HEX. BOLT						4		
33	1	165001-23140	FLANGE NUT						4		
34	1	165001-09530	FLANGE NUT						8		
35	1	165001-23570	SPACER						2		
36	1	165001-23580	HEX BOLT						2		
37	1	165001-23180	PACKING, COUPLING						2		
38	1	165001-23590	HOSE COUPLING						2		
39	1	165001-23230	HOSE COUPLING HANDLE						2		
40	1	165001-23170	HOSE BAND						3		
41	1	165001-23600	STRAINER						1		